



norament kivo

Errors as well as misprints and changes reserved. No guarantee is given for the accuracy and completeness of the information. The product images in this document may differ from the original. This document is not a contractual offer and only serves to provide non-binding information.

The nora brand and all other registered trademarks used in this document are registered to nora systems GmbH or its affiliates or subsidiaries. Other labels used here are trademarks of their respective owners.

nora systems, Inc.
9 Northeastern Blvd.
Salem, NH 03079
T: 800.332.NORA
T: 603.894.1021
info-us@nora.com
www.nora.com

02/2023 Form Order #809861

nora[®]
by Interface[®]



Industrial charm meets modern form

Concrete, steel and exposed brick are statement materials in modern architecture and interiors. In this industrial chic aesthetic, concrete flooring is a staple, but you can achieve the look with added performance. Meet norament kivo™ — a durable rubber flooring with the contemporary look of concrete and the added benefits of sound reduction and underfoot comfort.

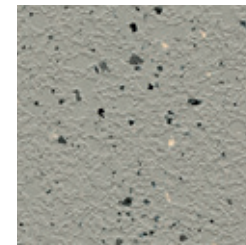
Natural colors, modern style

norament kivo's organic patterning and eight neutral colors pair excellently with modern statement materials and offer the performance and ease of maintenance you expect from nora® rubber flooring.

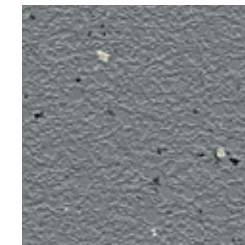
With an irregular grain design and slightly structured, two-tone surface, norament kivo offers a quieter alternative to concrete and sets the right tone for any space.



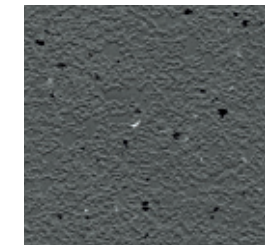
5361 PUMICE



5362 FLINT



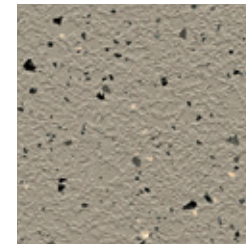
5363 SHARKSKIN



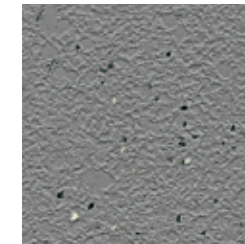
5364 PEWTER



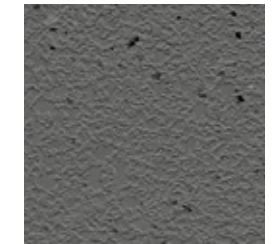
5365 CEMENT



5366 COBBLESTONE



5367 TITANIUM



5368 GRANITE

norament kivo

Art. 3166  8

~39.53" x 39.53" (1004 mm x 1004 mm)

 ~2.7 mm

Product Construction	Homogeneous Rubber Tile
Class / ASTM F1344	Type IB and Grade 2
Surface Type	Two-Tone
Indoor Air Quality	GREENGUARD Gold CDPH 01350 Compliant
Full Life Cycle Carbon Emissions	Carbon Neutral Floors™
LEED v4	Contributes to multiple IEQ and MR credits

Variations in granulate scattering, even within one production batch, define the product's aesthetic character.

Welding is not required unless specified. View weld recommendations at nora.com.

View details and the full product specification at nora.com.

Installation Method



DIRECTIONAL



Why nora® rubber flooring?



Reduced Maintenance

Little more than water needed - no finishes, coatings or harsh chemicals necessary.



Quiet Acoustical Performance

Attenuate noise pollution.



Durable Surface

Withstand extreme stress from heavy rolling loads and wheeled traffic.



Ergonomic Design

Add comfort underfoot, reducing foot and leg pain.



Superior Slip Resistance

Help to create safer spaces.



Supports Infection Control

Disinfect completely due to a dense, non-porous surface.



Cradle to Cradle Silver

Certification of whether a product is safe, circular and responsibly made.



Carbon Neutral Floors™

Third party verified carbon neutral throughout its entire life cycle as part of Interface's Carbon Neutral Floors program. Learn more at interface.com/carbonneutral



GREENGUARD Gold

Certified low VOC emissions.

Integrated system

nora and Interface cover every area of your building – all from a single source. Create harmonious, space-specific design with our system of soft and resilient floor coverings, including special floorings, stair treads and accessories.

Outstanding service

From design to post-installation, we have the experts to support your project at every step and can even be a valued resource for your organization's sustainability mission.

For additional information regarding usage in recommended applications, contact us or visit nora.com.

ORDER SAMPLES
Online at www.nora.com
Call 1.800.332.NORA
Email your sales rep or customer support specialist

BROWSE NORA.COM

- Design your floor with Interior Design Studio
- Find technical and environmental documents
- Access BIM/Revit Files

Product warranty

We will be happy to supply specific test results on all nora systems, Inc. products.

nora® by Interface® Product Warranty – Americas (Excerpt)

nora systems, Inc. (nora) warrants the following nora® brand products (collectively, the "Warranted nora Brand Flooring Products") as set forth below: norament® and noraplan® rubber flooring, norament rubber stairtread (excluding visually impaired strips), accessories (excluding visually impaired strips), nora® nTx™ 020 bond enhancer and adhesives, and the conductivity of its Electrostatic Dissipative ("ESD") flooring system (norament ed and noraplan ed flooring and adhesive).

This limited warranty and the applicable Installation Instructions and Maintenance Guidelines are subject to change at nora's discretion and without notice. Please contact nora or visit the nora.com website for the latest versions. For additional information regarding usage in recommended applications, please refer to www.nora.com or call 1-800-332-NORA. Warranty periods commence on the date of invoice of the product to the original end-use customer.